

## Weekly Air Monitoring Summary

**Client:** PPG Industries

**Location:** Site 174: Dennis Collins Park Site - Bayonne, NJ

This weekly air monitoring report includes both tabular information and written discussions summarizing the ambient air quality data collected in accordance with the Air Monitoring Plan for the above-referenced project and reporting period. The following information is provided in the data summary:

- **Table 1:** Site-Specific Alarm Levels;
- **Table 2:** Weekly Real-Time PM<sub>10</sub> Data Summary;
- **Table 3:** Weekly Hand-Held Data Summary;
- **Table 4:** Weekly Elevated Readings Summary for PM<sub>10</sub>;
- **Table 5:** Program-to-Date Average Concentrations for Hexavalent Chromium, Total Dust, and Real-Time PM<sub>10</sub>;
- **Figure 1:** Meteorological Data; and
- **Figure 2:** Station Location Map.

This report covers real-time air monitoring from March 29 through April 4, 2021 at the Dennis Collins Park Site (Site). Real-time air monitoring is divided into three types of monitoring including; perimeter air monitoring (at the site boundaries), meteorological monitoring, and hand-held monitoring. The air monitoring report details results associated with the site, consisting of 5 stations and periodic hand-held monitoring. See Figure 2 for station locations.

### **Perimeter air monitoring includes the following:**

- Real-time 15-minute average PM<sub>10</sub> readings at each location during the work day;
- Periodic hand-held readings during remedial activities;
- Time integrated 8-to-10-hour Total Dust and Hexavalent Chromium laboratory sampling;
- Time integrated 24-hour Total Dust and Hexavalent Chromium laboratory sampling; and
- Meteorological measurements of 15-minute average wind speed, relative humidity, and temperature are recorded onsite.

### **Summary of Real-Time Air Monitoring Results for PM<sub>10</sub> Concentrations**

15-minute Time Weighted Average (TWA) PM<sub>10</sub> Site action levels are shown in Table 1. The maximum 15-minute TWA PM<sub>10</sub> readings are shown in Table 2. The maximum hand-held PM<sub>10</sub> concentrations are shown in Table 3. Elevated readings above the Site alarm levels are presented and explained in Table 4, if applicable.

### **Summary of the Program-to-Date Integrated Sampling and Real-Time Air Monitoring Results**

Integrated sampling results for hexavalent chromium (Cr<sup>+6</sup>) and total dust are updated when available. Program-to-date average concentrations for integrated Cr<sup>+6</sup>, total dust, and real-time PM<sub>10</sub> readings are shown in Table 5.

### **Summary of Meteorological Monitoring**

The time series plots of wind speed, temp, and relative humidity for the report period are shown in Figure 1.

Table 1: Site-Specific Action Levels

Alarm Levels	Alert Level (15 minute TWA)	Action Level (15 minute TWA)
PM <sub>10</sub>	255 µg/m <sup>3</sup>	339 µg/m <sup>3</sup>

Table 2: Weekly Real-Time PM<sub>10</sub> Data Summary

Maximum 15-Minute PM <sub>10</sub> TWA (Action Level: 339 µg/m <sup>3</sup> )					
Date	AMS 1	AMS 2	AMS 3	AMS 4	AMS 5
3/29/2021	N/A	N/A	N/A	N/A	N/A
3/30/2021	N/A	N/A	N/A	N/A	N/A
3/31/2021	N/A	N/A	N/A	N/A	N/A
4/1/2021	N/A	N/A	N/A	N/A	N/A
4/2/2021	N/A	N/A	N/A	N/A	N/A
4/3/2021	N/A	N/A	N/A	N/A	N/A
4/4/2021	N/A	N/A	N/A	N/A	N/A
Weekly Statistics					
Max	N/A	N/A	N/A	N/A	N/A
Average	N/A	N/A	N/A	N/A	N/A

Note: Highlighted cells indicate exceedance of the action level. Air monitoring at perimeter stations discontinued after 3/22/21.

Table 3: Weekly Hand-Held Data Summary for PM<sub>10</sub> Concentration

Maximum Instantaneous Hand-Held PM <sub>10</sub> Concentration			
Date	PM <sub>10</sub> (µg/m <sup>3</sup> )	Time	Location
3/29/2021	N/A	N/A	N/A
3/30/2021	N/A	N/A	N/A
3/31/2021	N/A	N/A	N/A
4/1/2021	86	10:00	Downwind of stockpile
4/2/2021	63	7:30	Downwind of stockpile

Note: Air monitoring at perimeter stations discontinued after 3/22/21. Handheld monitoring conducted for stockpile loadout at downwind location on 4/1/21 & 4/2/21.

Table 4: Weekly Elevated Readings Summary

Location	Date	Time	Weather Conditions	Elevated Concentration	Explanation
N/A	N/A	N/A	N/A	N/A	N/A

Table 5: Program-to-Date Average Concentrations for Hexavalent Chromium, Total Dust, and Real-Time PM<sub>10</sub> Summary

Program-to-Date Averages (Cr <sup>+6</sup> & Total Dust Results from 1/1/20-3/22/21)						
	AMS 1	AMS 2	AMS 3	AMS 4	AMS 5	AMS 6
Cr <sup>+6</sup> Concentration (ng/m <sup>3</sup> )	6.5	7.0	7.0	7.2	2.1	12.7
Total Dust Concentration (µg/m <sup>3</sup> )	46.3	54.4	51.0	49.2	15.6	31.8
Real-Time PM <sub>10</sub> (µg/m <sup>3</sup> )	19.0	29.8	26.3	39.6	18.7	18.1

Note: AMS 6 was removed from use on 3/25/20 and monitoring stations were reconfigured around the site.

ng/m<sup>3</sup> - Nanograms per cubic meter      µg/m<sup>3</sup> - Micrograms per cubic meter      NA - Not Applicable

Figure 1: Meteorological Data

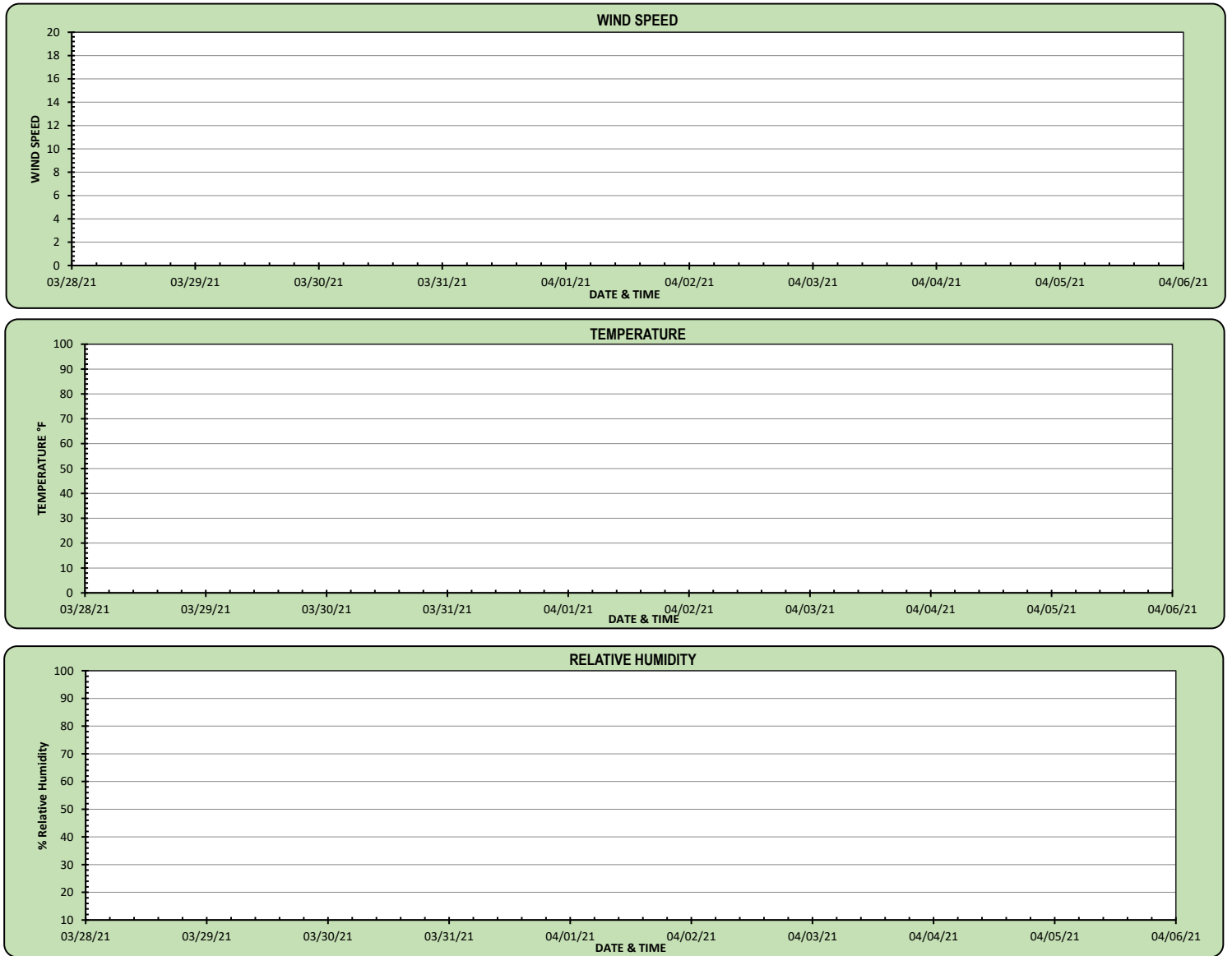


Figure 2: Station Location Map

