

## Weekly Air Monitoring Summary

**Client:** Jersey City Redevelopment Authority

**Location:** Morris Canal Chromium Sites 121 & 207

Berry Lane Park - Jersey City, NJ

**Period:** July 23 through July 27, 2012

This weekly air monitoring summary report includes both tabular information and written discussions summarizing the ambient air-quality data collected in accordance with the Air Monitoring Plan for the above referenced project and reporting period. The following information is provided in the data summary:

- **Table 1:** Site Specific Alarm Levels;
- **Table 2:** Weekly real-time PM<sub>10</sub> data summary;
- **Table 3:** Weekly elevated readings summary for PM<sub>10</sub>;
- **Table 4:** Program-to-date average concentrations for time integrated hexavalent chromium, time integrated PM<sub>10</sub>, and continuous PM<sub>10</sub>;
- **Figure 1:** Meteorological data; and
- **Figure 2:** Daily/weekly Site map(s).

This report covers the real-time air monitoring from Monday, July 23 through Friday, July 27, 2012 at the Berry Lane Park Site (Site). Real-time air monitoring is divided into three types of monitoring including; fenceline air monitoring (at the Site boundaries), exclusion zone monitoring (at the perimeter of the exclusion zone), and meteorological monitoring (at multiple fenceline stations). Each monitoring type is described in more detail in the following sections.

Fenceline air monitoring includes five Fixed Air Monitoring (FAM) stations.

### Fenceline air monitoring includes the following:

- Real-time 15-minute average PM<sub>10</sub> concentrations at each of the five fenceline locations. (All FAM stations operate 8 -10 hours during remedial activities, Monday through Friday);
- Time integrated 8 - 10 hour Total Dust and Hexavalent Chromium laboratory sampling at three of the FAM stations (FAM stations 1, 3, and 5 – see Figure 2); and
- Time integrated 24-hour Total Dust and Hexavalent Chromium laboratory sampling at two of the FAM stations (FAM stations 2 and 4 – see Figure 2).

### Exclusion Zone air monitoring includes the following:

- Real-time 15-minute average PM<sub>10</sub> concentrations at each of the four exclusion zone locations (PAM stations operate 8-10 hours during remedial activities, Monday through Friday).
- Time integrated 8-hour Total Dust and Hexavalent Chromium laboratory samples at each of the four exclusion zone locations;

Meteorological measurements of 15-minute average wind direction, wind speed, sigma theta (wind variation), relative humidity, and temperature are recorded onsite at a central location.

### Summary of Real-Time Air Monitoring Results for PM10

During the period of July 23 through July 27, there were no elevated 15 minute Time Weighted Average (TWA) PM<sub>10</sub> concentrations above the Site alarm levels. The maximum concentrations of PM10 at the fenceline and exclusion zone are shown in Table 2 and Table 3, respectively. Elevated readings above the Site alarm levels are presented in Table 3, if applicable.

### Summary of the Program-to-Date Integrated Sampling and Continuous Air Monitoring Results

Time integrated sampling results for Total Dust and Hexavalent Chromium (Cr6) are updated every other week. The program-to-date average concentrations for the 8-hour integrated Cr6 and Total Dust are shown in Table 4. The program-to-date average real-time PM<sub>10</sub> TWA readings are also shown in Table 4 for the same period.

### Summary of Meteorological Monitoring

The time series plots of wind speed, temperature, and relative humidity for the report period are shown in **Figure 1**.

### Summary of the Air Monitoring Locations

A summary of the air monitoring locations during the report period are shown in **Figure 2**.

**Table 1: Site Specific Action Levels**

Alarm Levels	Alert Level (15 minute TWA)	Action Level (15 minute TWA)
PM <sub>10</sub>	250 µg/m <sup>3</sup>	333 µg/m <sup>3</sup>

**Table 2: Weekly Real-Time PM<sub>10</sub> Data Summary (7/23/12 – 7/27/12)**

	<i>Fenceline Maximum 15-Minute PM<sub>10</sub> TWA (Action Level = 333 µg/m<sup>3</sup>)</i>					<i>Exclusion Zone Maximum 15-Minute PM<sub>10</sub> TWA (Action Level = 333 µg/m<sup>3</sup>)</i>			
<b>Date</b>	<b>FAM 1</b>	<b>FAM 2</b>	<b>FAM 3</b>	<b>FAM 4</b>	<b>FAM 5</b>	<b>PAM 1</b>	<b>PAM 2</b>	<b>PAM 3</b>	<b>PAM 4</b>
<b>Mon 7/23/12</b>	40.4	34.9	35.3	23.9	38.3	66.7	44.3	38.7	34.3
<b>Tue 7/24/12</b>	55.4	49.2	57.3	51.2	52.6	111.9	118.7	100.8	184.2
<b>Wed 7/25/12</b>	8.6	6.8	6.8	29.6	10.5	32.6	112.5	80.9	79.6
<b>Thu 7/26/12</b>	22.9	56.1	27.7	29.9	27.5	93.2	63.9	68.3	41.2
<b>Fri 7/27/12</b>	40.8	19.5	26.1	15.8	36.4	46.0	136.7	40.0	38.6
<b>Weekly Statistics</b>									
<b>Weekly Maximum</b>	55.4	56.1	57.3	51.2	52.6	111.9	118.7	100.8	184.2
<b>Weekly Average</b>	15.6	16.9	15.4	17.3	16.3	46.5	40.9	41.7	42.5
<p>FAM = Fixed Air Monitoring Station  PAM = Portable Air Monitoring Station  PM<sub>10</sub> = Respirable Particulate Matter (µg/m<sup>3</sup>)  µg/m<sup>3</sup> = Micrograms per cubic meter  NA = Not Applicable  ND = No Data</p> <p>- Highlighted concentrations require further analysis based on Site and off Site activities (see the elevated concentration summary report).  - FAM and PAM reported PM<sub>10</sub> readings at the fenceline and at the perimeter of the exclusion zone represent 15-minute block averages.</p>									

**Table 3: Weekly Elevated Readings Report (7/23/12 – 7/27/12)**

Parameter	Date	Time	Location	Wind Conditions	Elevated Concentration	Explanation
<b><i>Fenceline Air Monitoring (15-Minute Average Concentrations)</i></b>						
NA	NA	NA	NA	NA	NA	NA
<b><i>Exclusion Zone Air Monitoring (15-Minute Average Concentrations)</i></b>						
NA	NA	NA	NA	NA	NA	NA
<p>FAM = Fixed Air Monitoring Station            PAM = Portable Air Monitoring Station            PM<sub>10</sub> = Respirable Particulate Matter measured in micrograms per cubic meter (µg/m<sup>3</sup>)            NA = Not Applicable            ND = No Data</p> <p>- FAM reported PM<sub>10</sub> readings represent 15-minute block averages at the fenceline.            - PAM reported PM<sub>10</sub> readings represent 15-minute block averages at the exclusion zone.</p>						

**Table 3: Program-to-Date Average Concentrations (7/23/10 – 6/29/12)**

	Fenceline Air Sampling Stations					Exclusion Zone Air Sampling Stations			
Program-to-Date Averages	FAM-1	FAM-2	FAM-3	FAM-4	FAM-5	PAM-1	PAM-2	PAM-3	PAM-4
Cr6 Concentration (ng/m <sup>3</sup> )	20.4	20.2	20.2	20.4	20.4	NA	NA	NA	NA
Total Dust Concentration (µg/m <sup>3</sup> )	238.2	314	221	234	238.2	NA	NA	NA	NA
Real-Time PM <sub>10</sub> TWA (µg/m <sup>3</sup> )	15.6	16.9	15.4	17.3	16.3	46.5	40.9	41.7	42.5

FAM = Fixed Air Monitoring Station

PAM = Portable Air Monitoring Station

Cr6 = Hexavalent Chromium measured in nanograms per cubic meter (ng/m<sup>3</sup>)

PM<sub>10</sub> = Respirable Particulate Matter measured in micrograms per cubic meter (µg/m<sup>3</sup>)

NA = Not Applicable

ND = No Data

- FAM/PAM Total Dust and Cr6 results represent time integrated 8-hour concentrations at the perimeter and exclusion zone. Results of the integrated laboratory analysis lag the real time results because of standard laboratory analysis periods (5 days).

- FAM/PAM Real-time PM<sub>10</sub> readings represent 15-minute block averages at the fenceline and exclusion zone, respectively.

- Baseline monitoring conducted between July 12 through 16, 2012.

Figure 1: Meteorological Monitoring Results Summary (7/23/12 – 7/27/12)

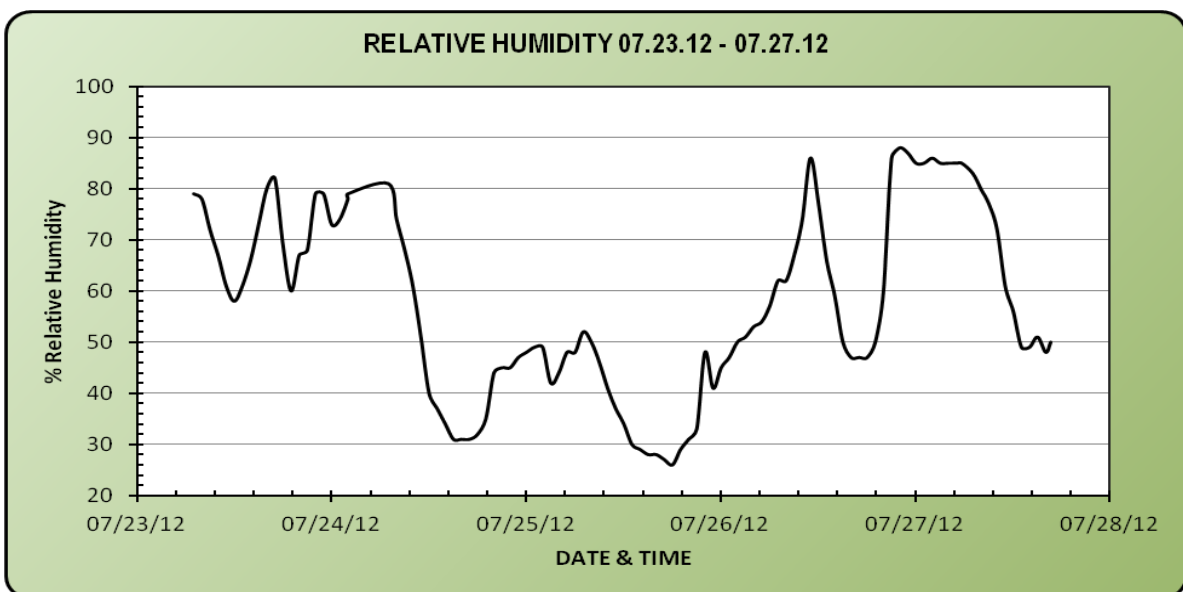
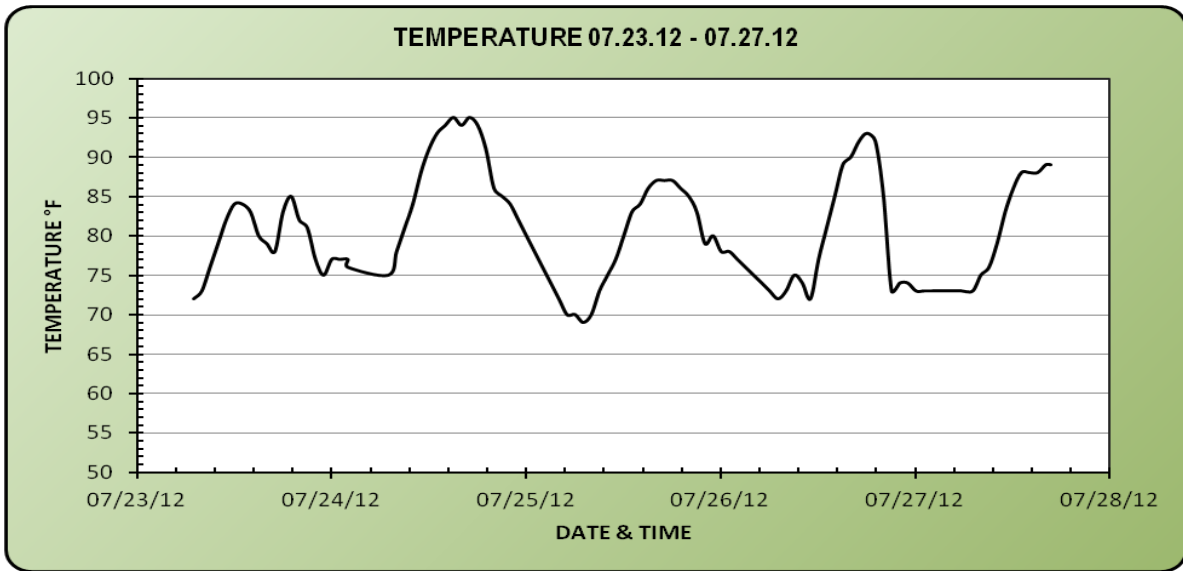
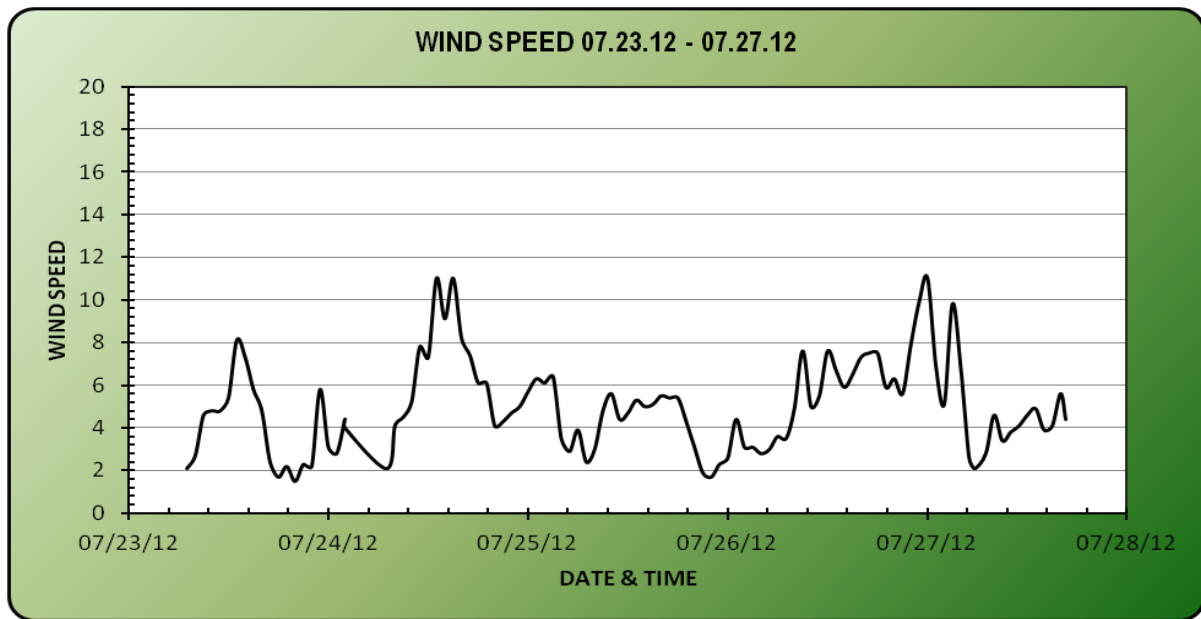


Figure 2: Weekly/Daily Site Map 7-23 to 7-27



Legend:

- #** Fenceline Fixed Air Monitoring Station (FAM)
- #** Perimeter of the Exclusion Zone Portable Air Monitoring Station (PAM)