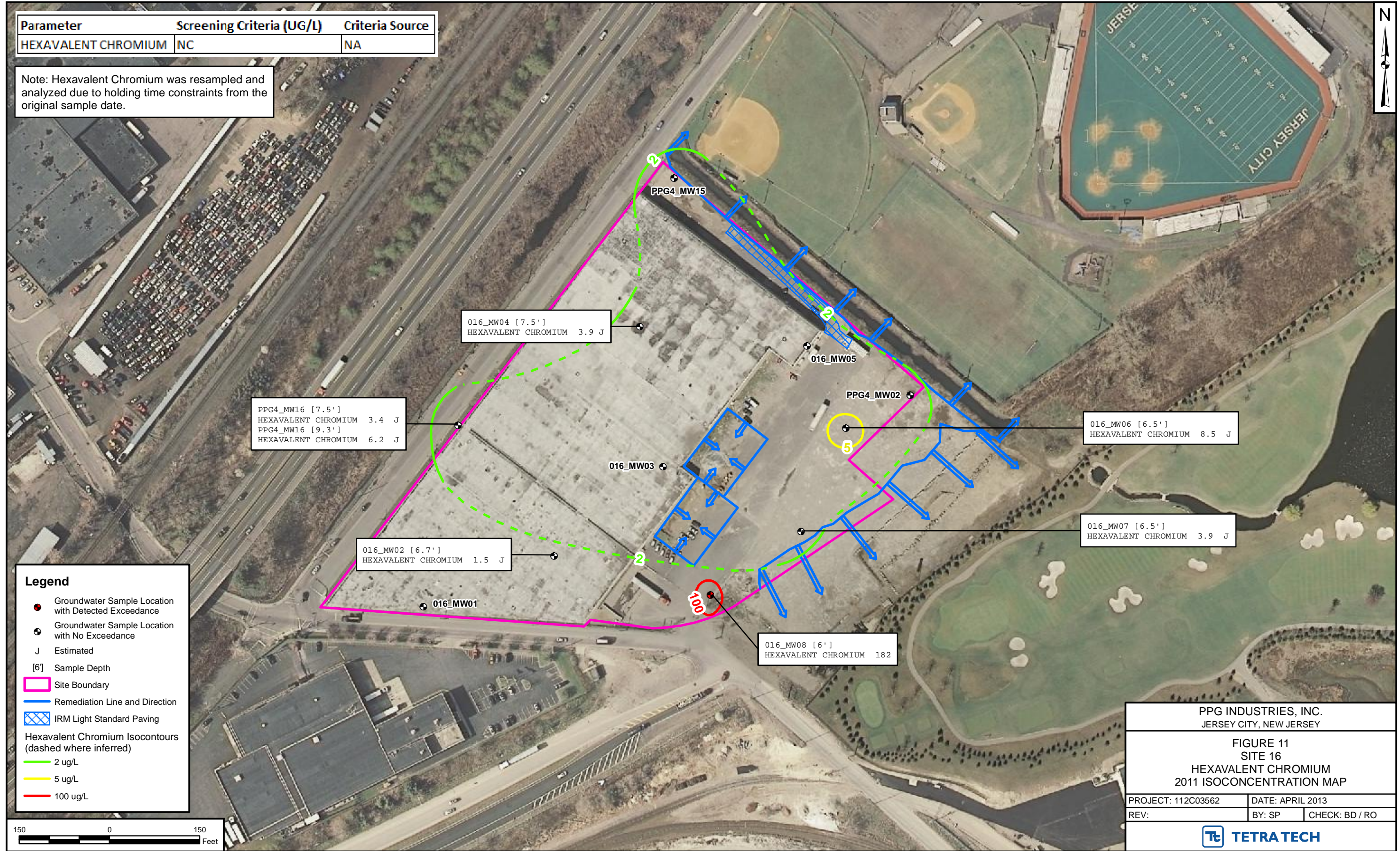


Parameter	Screening Criteria (UG/L)	Criteria Source
HEXAVALENT CHROMIUM	NC	NA

Note: Hexavalent Chromium was resampled and analyzed due to holding time constraints from the original sample date.



Legend

- Groundwater Sample Location with Detected Exceedance
- Groundwater Sample Location with No Exceedance
- J Estimated
- [6'] Sample Depth
- Site Boundary
- Remediation Line and Direction
- IRM Light Standard Paving
- Hexavalent Chromium Isoconcentrations (dashed where inferred)
- 2 ug/L
- 5 ug/L
- 100 ug/L

PPG4_MW16 [7.5']
HEXAVALENT CHROMIUM 3.4 J
PPG4_MW16 [9.3']
HEXAVALENT CHROMIUM 6.2 J

016_MW04 [7.5']
HEXAVALENT CHROMIUM 3.9 J

016_MW02 [6.7']
HEXAVALENT CHROMIUM 1.5 J

016_MW01

016_MW03

PPG4_MW15

016_MW05

PPG4_MW02

016_MW08 [6']
HEXAVALENT CHROMIUM 182

016_MW06 [6.5']
HEXAVALENT CHROMIUM 8.5 J

016_MW07 [6.5']
HEXAVALENT CHROMIUM 3.9 J

PPG INDUSTRIES, INC.
JERSEY CITY, NEW JERSEY

FIGURE 11
SITE 16
HEXAVALENT CHROMIUM
2011 ISOCONCENTRATION MAP

PROJECT: 112C03562	DATE: APRIL 2013
REV:	BY: SP CHECK: BD / RO

TETRA TECH