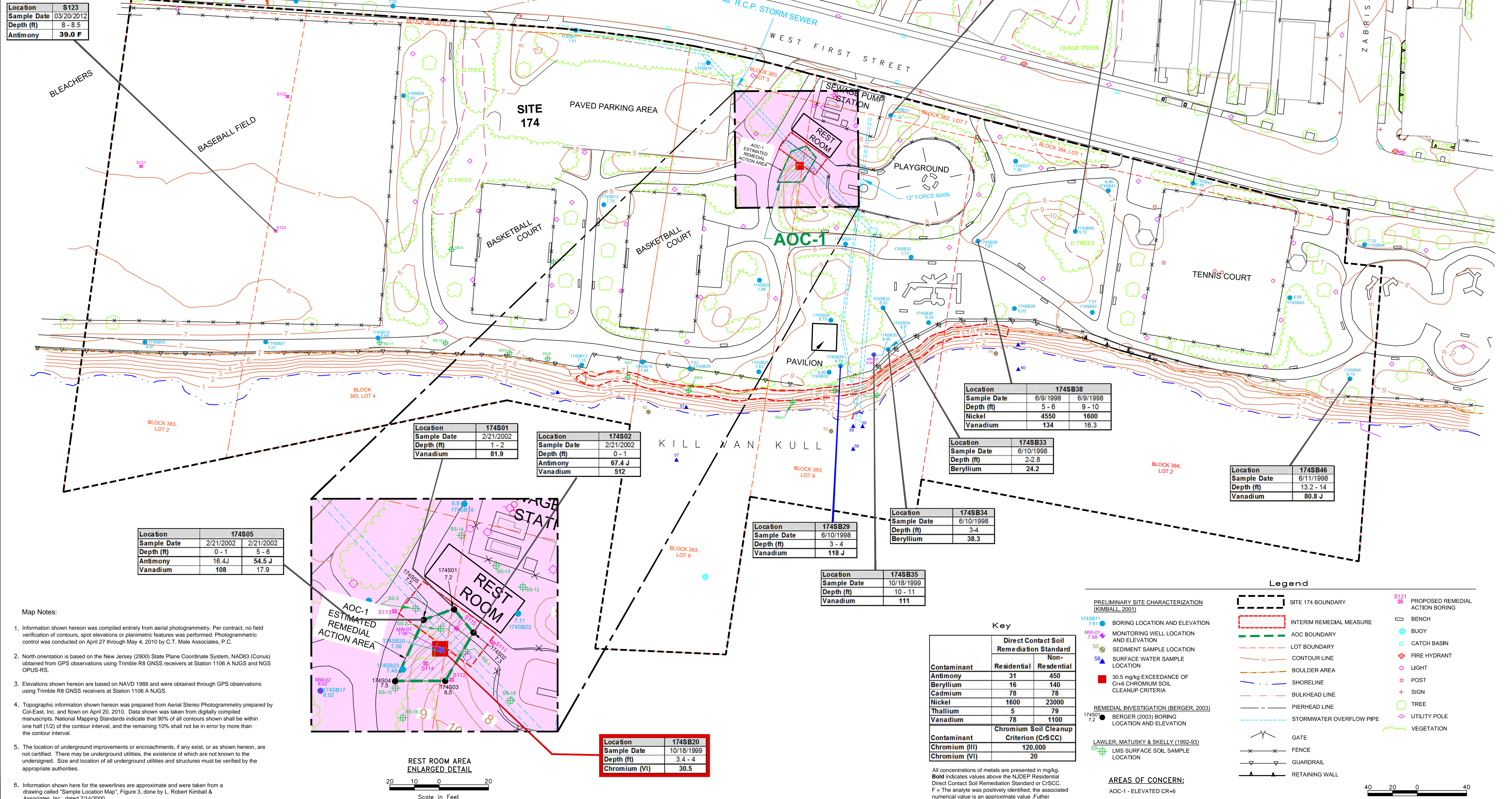


Location	S123
Sample Date	03/20/2012
Depth (ft)	8 - 8.5
Antimony	39.0 F

Location	174SB40
Sample Date	6/3/1998
Depth (ft)	7 - 8
Nickel	4300 J

Location	174SB43
Sample Date	6/5/1998
Depth (ft)	2 - 3
Vanadium	82.1 J

Location	174SB31
Sample Date	6/4/1998
Depth (ft)	0-1
Beryllium	31.8



- Map Notes:
- Information shown hereon was compiled entirely from aerial photography. Per contract, no field verification of contours, spot elevations or planimetric features was performed. Photogrammetric control was conducted on April 27 through May 4, 2010 by C.T. Male Associates, P.C.
 - North orientation is based on the New Jersey (2900) State Plane Coordinate System, NAD83 (Conus) obtained from GPS observations using Trimble R8 GNSS receivers at Station 1106 A NJGS and NGS OPUS-RS.
 - Elevations shown hereon are based on NAVD 1988 and were obtained through GPS observations using Trimble R8 GNSS receivers at Station 1106 A NJGS.
 - Topographic information shown hereon was prepared from Aerial Stereo Photography prepared by Col-East, Inc. and flown on April 20, 2010. Data shown was taken from digitally compiled manuscripts. National Mapping Standards indicate that 90% of all contours shown shall be within one half (1/2) of the contour interval, and the remaining 10% shall not be in error by more than the contour interval.
 - The location of underground improvements or encroachments, if any exist, or as shown hereon, are not certified. There may be underground utilities, the existence of which are not known to the undersigned. Size and location of all underground utilities and structures must be verified by the appropriate authorities.
 - Information shown here for the sewerlines are approximate and were taken from a drawing called "Sample Location Map", Figure 3, done by L. Robert Kimball & Associates, Inc., dated 7/14/2000



Location	174SB20
Sample Date	10/18/1999
Depth (ft)	3.4 - 4
Chromium (VI)	30.5

Contaminant	Direct Contact Soil Remediation Standard	
	Residential	Non-Residential
Antimony	31	450
Beryllium	16	140
Cadmium	78	78
Nickel	1600	23000
Thallium	5	79
Vanadium	78	1100

Contaminant	Chromium Soil Cleanup Criterion (CrSCC)
	Chromium (III)
Chromium (VI)	20

All concentrations of metals are presented in mg/kg. Bold indicates values above the NJDEP Residential Direct Contact Soil Remediation Standard or CrSCC. F = The analyte was positively identified; the associated numerical value is an approximate value. Further investigation needed to address exceedance. J = The analyte was positively identified; the associated numerical value is an approximate value.

Legend

PRELIMINARY SITE CHARACTERIZATION (KIMBALL, 2001)

- 174SB11 7.61 BORING LOCATION AND ELEVATION
- MV-01 7.98 MONITORING WELL LOCATION AND ELEVATION
- 50 SEDIMENT SAMPLE LOCATION
- 58 SURFACE WATER SAMPLE LOCATION

REMEDIAL INVESTIGATION (BERGER, 2003)

- 174S01 7.2 BERGER (2003) BORING LOCATION AND ELEVATION
- SS-01 LMS SURFACE SOIL SAMPLE LOCATION

LAWLER, MATUSKY & SKELLY (1992-93)

- SS-01 LMS SURFACE SOIL SAMPLE LOCATION

AREAS OF CONCERN:

- AOC-1 - ELEVATED CR+6

Key

- 174SB11 7.61 BORING LOCATION AND ELEVATION
- MV-01 7.98 MONITORING WELL LOCATION AND ELEVATION
- 50 SEDIMENT SAMPLE LOCATION
- 58 SURFACE WATER SAMPLE LOCATION
- 174S01 7.2 BERGER (2003) BORING LOCATION AND ELEVATION
- SS-01 LMS SURFACE SOIL SAMPLE LOCATION

Legend

- SITE 174 BOUNDARY
- INTERIM REMEDIAL MEASURE
- AOC BOUNDARY
- LOT BOUNDARY
- CONTOUR LINE
- BOULDER AREA
- SHORELINE
- BULKHEAD LINE
- PIERHEAD LINE
- STORMWATER OVERFLOW PIPE
- GATE
- FENCE
- GUARDRAIL
- RETAINING WALL
- PROPOSED REMEDIAL ACTION BORING
- BENCH
- BUOY
- CATCH BASIN
- FIRE HYDRANT
- LIGHT
- POST
- SIGN
- TREE
- UTILITY POLE
- VEGETATION

Scale in Feet

40 20 0 40

SOIL EXCEEDANCES OF DIRECT CONTACT SOIL REMEDIATION STANDARD

PPG INDUSTRIES

SITE 174 - DENNIS P. COLLINS PARK

WEST 1st STREET, BAYONNE, NJ

PROJECT NUMBER: 60213464.PM.INGA.DCP.A

DATE: 05/10/2012

SCALE: AS SHOWN

FIGURE NUMBER:

3

SHEET NUMBER:

AECOM

30 KNIGHTSBRIDGE ROAD, SUITE 620
 PISCATAWAY, NEW JERSEY 08854
 TEL: 908.346.5000
 FAX: 908.346.5000
 WEB: HTTP://WWW.AECOM.COM

DESIGNED BY:	MS
DRAWN BY:	JK
CHECKED BY:	
APPROVED BY:	
NO.:	
DATE:	
DESCRIPTION:	
REVISIONS:	

NO.:	
DATE:	
DESCRIPTION:	
REVISIONS:	