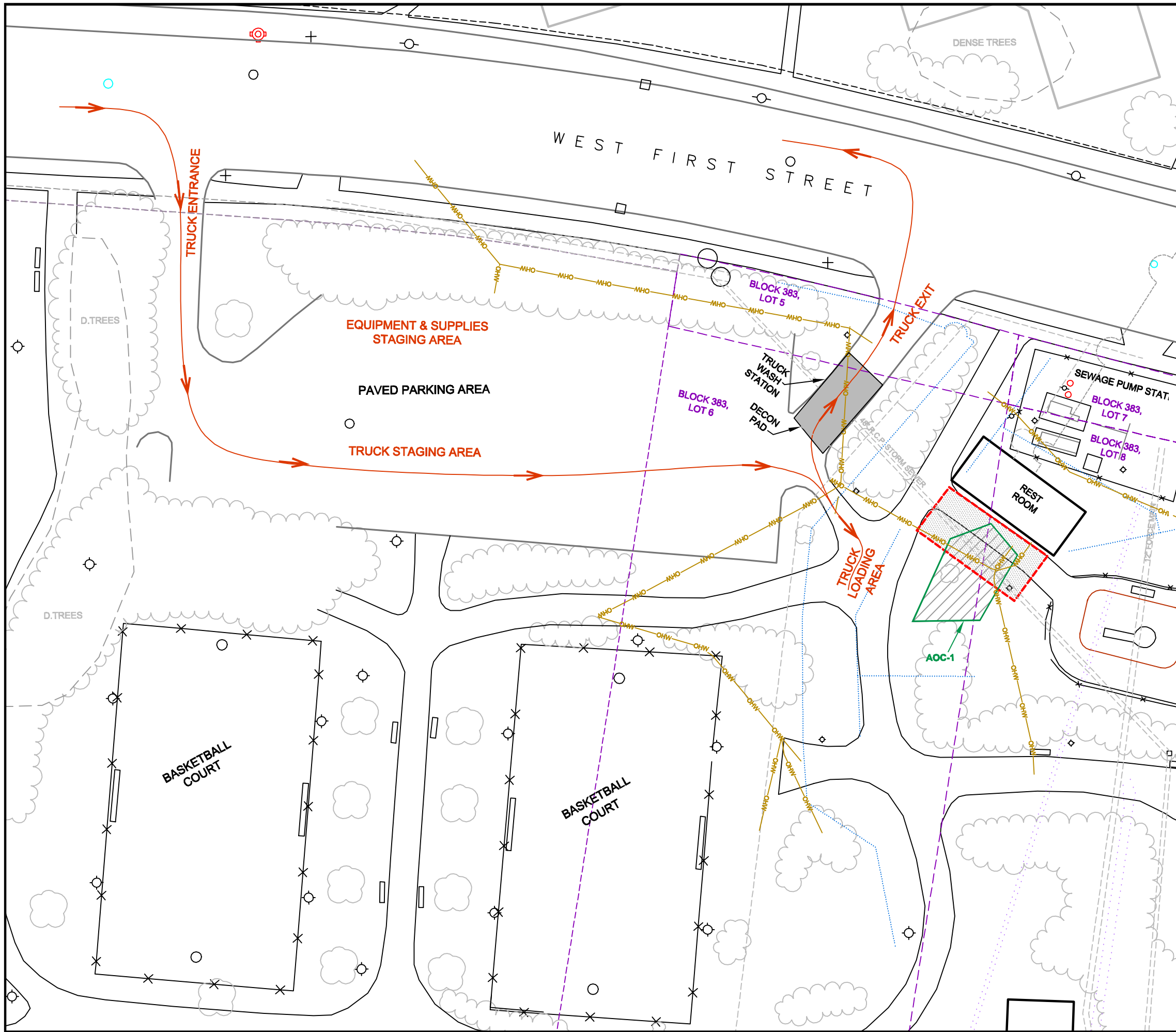


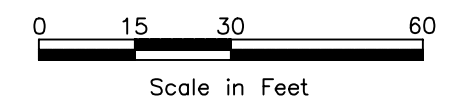
Piscataway on 'uspsw2vp001(J)
 File: J:\Project\PPG INDUSTRIES - PPG\Cadd\Site_174\AccessFigures\FieldAndRestAreas_2011-08-03.dwg Layout: RemedialPlan-Fig8 User: SurmanS Plotted: Oct 09, 2012 - 12:26pm



Legend

- AOC 1 - ESTIMATED EXTENT OF REMEDIAL ACTION AREA**
- INTERIM REMEDIAL MEASURE AREA (IRM)**
- 24" WATER MAIN**
- WATER LINE**
- LOT BOUNDARY**
- ELECTRIC LINE**
- TRUCK ROUTE & DIRECTION OF TRAVEL**

NOTES: SUBSURFACE UTILITY LOCATIONS ADAPTED FROM SHEET 9 OF 25, PARK UTILITIES, AND SHEET 19 OF 25, PARK IRRIGATION SYSTEM, OFFICE OF THE CITY ENGINEER, BAYONNE, NJ, 25 MARCH 1980.



ENVIRONMENT 30 Knightsbridge Road Suite 520 Piscataway, NJ 08854 Phone: 732.564.3600	PPG INDUSTRIES DENNIS P. COLLINS PARK WEST 1st STREET, BAYONNE, NJ		
	REMEDIAL PLAN REST ROOM AREA SITE 174		
PROJECT NO. 60213464.PM.NGA.A	DRAWN BY: /jk	DATE: 08/03/2011	FIGURE 8